



# MONTHLY MEMBERSHIP PROGRESS REPORT

District 8 S

Results as of: 12/31/2014

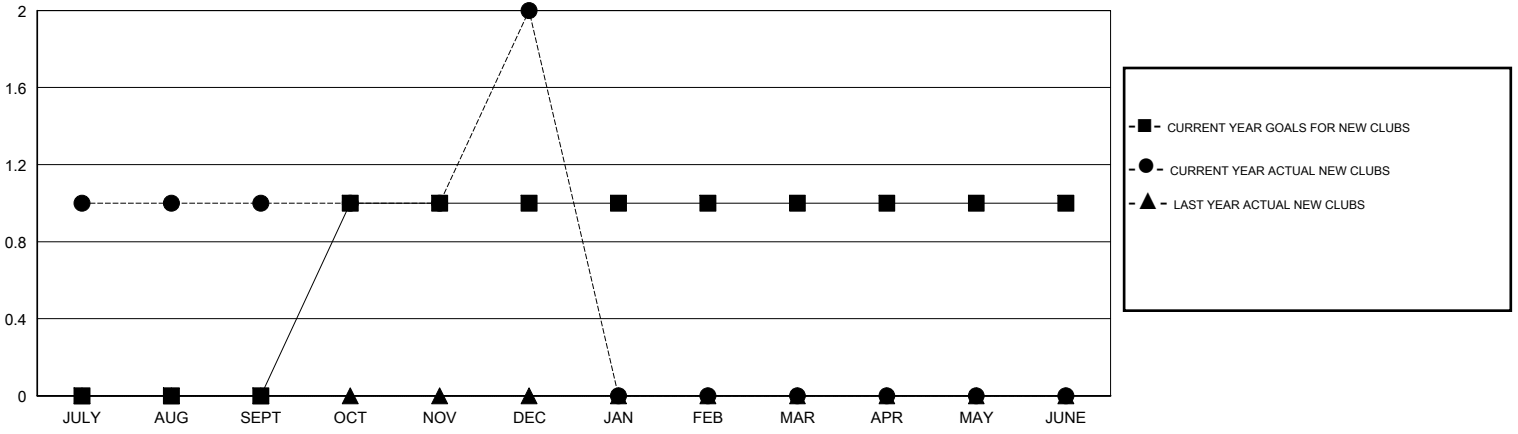
GMT: HAL GRIFFIN

LOCATION LOUISIANA

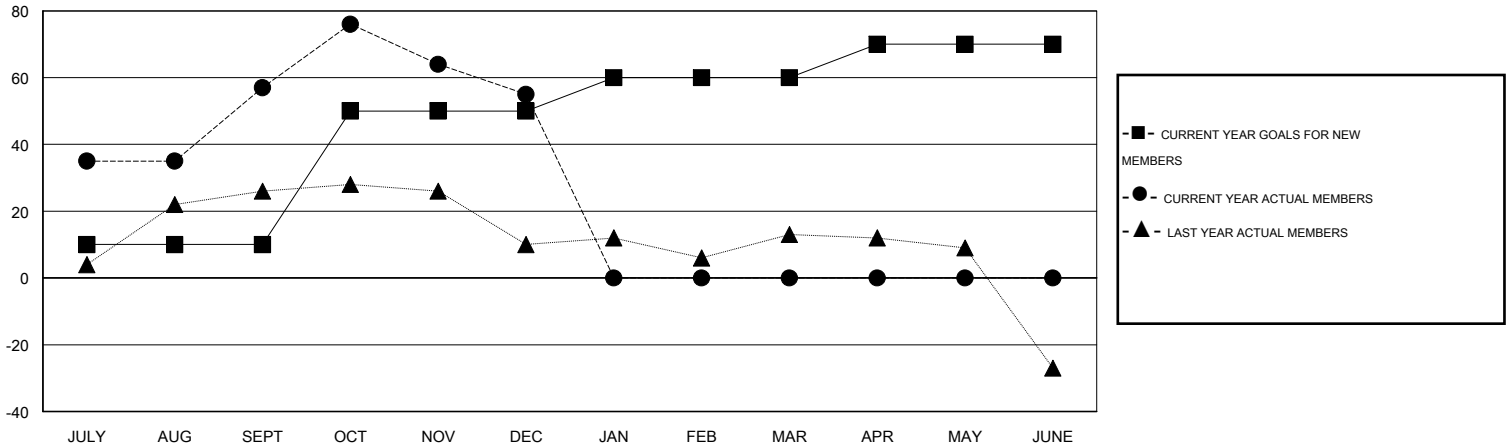
GMT CA 1

Clubs					Members				
RESULTS FOR 2014-2015					RESULTS FOR 2014-2015				
QUARTER	NEW CLUB GOAL	NEW CLUBS	DROPPED CLUBS	NET GAIN/LOSS	QUARTER	NEW MEMBER GOAL	CHARTER AND NEW MEMBERS ADDED	DROPPED MEMBERS	NET GAIN/LOSS
JULY/AUG/SEPT	0	1	0	1	JULY/AUG/SEPT	10	100	43	57
OCT/NOV/DEC	1	1	0	1	OCT/NOV/DEC	40	58	60	-2
JAN/FEB/MAR	0	0	0	0	JAN/FEB/MAR	10	0	0	0
APR/MAY/JUNE	0	0	0	0	APR/MAY/JUNE	10	0	0	0

GOALS AND ACTUAL NEW CLUBS CUMULATIVE



GOALS AND ACTUAL MEMBERS CUMULATIVE



DROPPED CLUBS: 0	22 CLUBS OF 41 ADDED 1 OR MORE NEW MEMBERS	<u>GENDER DISTRIBUTION</u>	
<u>DROPPED MEMBERS</u>		MALE	700 (59.32%)
DECEASED	13	FEMALE	480 (40.68%)
CLUB CANCELLED	0	<u>FAMILY UNIT MEMBERS</u> 337	
OTHER	90	<u>HEAD OF HOUSEHOLD</u> 157	
TOTAL	103	<u>NON-HEAD OF HOUSEHOLD</u> 180	

[CLICK HERE FOR HEALTH ASSESSMENT DATA](#)